



NCODA Resource Guide

Professional Development

Oncology Basics.....	2
Continuing Education	3
Regional Leaders.....	5
Communities	7



PROFESSIONAL DEVELOPMENT: BUILDING EXPERTISE ACROSS THE ONCOLOGY CARE TEAM

As oncology care grows more complex, the need for structured, accessible and practical professional development has never been greater. NCODA's Professional Development programs equip multidisciplinary oncology teams — including pharmacists, technicians, advanced practice providers, nurses and other oncology professionals — with the clinical knowledge, operational insight and leadership skills necessary to deliver high-quality, patient-centered cancer care.

From foundational education to accredited continuing education, fellowships and student engagement, NCODA offers learning pathways that support professionals at every stage of their careers.

A SOLID FOUNDATION: THE ONCOLOGY BASICS COURSE

At the core of NCODA's portfolio is the Oncology Basics Course, a comprehensive, self-paced program designed to strengthen foundational oncology knowledge.

Developed for pharmacy students, residents, fellows and clinicians transitioning into oncology practice, the course provides approximately 15 hours of targeted instruction focused on real-world application. It covers:

- ▲ Core principles of oncology pharmacotherapy;
- ▲ Mechanisms of action of cytotoxic agents, targeted therapies and immunotherapies;
- ▲ Therapy selection frameworks for hematologic and solid tumor malignancies;
- ▲ Common toxicity profiles and management strategies; and
- ▲ Patient monitoring and safety considerations across the treatment continuum.

NCODA is actively expanding Continuing Education (CE) offerings to serve advanced practice providers, nurses and other oncology professionals as part of its commitment to team-based oncology care.

Rather than emphasizing abstract theory, the Oncology Basics Course centers on clinical context and practical decision-making. Learners gain confidence in understanding how therapies work, why regimens are selected and how adverse effects are anticipated and managed in everyday practice. The course bridges the gap between academic training and the realities of medically integrated oncology care.

CONTINUING EDUCATION THAT FITS CLINICAL PRACTICE

Beyond foundational learning, NCODA offers accredited continuing education programs tailored to the needs of busy oncology professionals. Live and on-demand activities address emerging therapies, operational innovation, reimbursement considerations, quality initiatives and clinical nuance.

As an Accreditation Council for Pharmacy Education (ACPE)-accredited provider, NCODA enables pharmacy professionals to earn CE credits while staying current with evolving standards of care. Programs frequently incorporate case-based discussion and frontline perspectives, reinforcing NCODA's focus on practical, clinically relevant education.

MENTORSHIP, FELLOWSHIPS AND STUDENT ENGAGEMENT

Professional growth also extends beyond formal coursework. NCODA's mentorship initiatives connect early-career professionals and students with experienced oncology leaders, fostering

guidance, professional development, and knowledge exchange.

The NCODA Fellowship Program provides Doctor of Pharmacy graduates with immersive experience in medically integrated oncology practice. Fellows engage in clinical initiatives, research projects, content development and national engagement efforts that influence oncology care delivery.

For students, NCODA's Professional Student Organization (PSO) and PSO chapters offer leadership development, project participation and exposure to multidisciplinary oncology practice. These initiatives create meaningful entry points into oncology and help cultivate the next generation of oncology professionals.

SUPPORTING CAREER ADVANCEMENT

NCODA's Career Share platform further supports professional advancement by connecting members with career opportunities across the oncology ecosystem. By aligning talent with medically integrated oncology practices, the organization strengthens workforce development while supporting high-quality patient care.

Across all professional development offerings, NCODA emphasizes collaboration, practical implementation and clinical excellence. Whether strengthening foundational knowledge through the Oncology Basics Course, earning continuing education credit, engaging in mentorship or participating in fellowship training, oncology professionals have access to resources that support lifelong learning.

Learn more about available programs at [NCODA.org/professional-development](https://www.ncoda.org/professional-development).



NCODA members attend a live continuing education session at a previous NCODA International Fall Summit.

CONTINUING EDUCATION: PRACTICAL LEARNING FOR THE MODERN ONCOLOGY PRACTICE

In oncology, continuing education is not optional — it is essential for safe, coordinated and sustainable cancer care. The pace of therapeutic innovation, the expansion of biomarker-driven treatment decisions, evolving reimbursement models and increasing operational complexities demand that oncology professionals engage in lifelong learning.

NCODA's continuing education (CE) program is built around that reality. Designed for multidisciplinary oncology teams, NCODA CE offerings provide clinically relevant, practice-ready education that supports pharmacists, pharmacy technicians, nurses and other

oncology professionals in delivering safe, effective and coordinated care.

A FRAMEWORK FOR REAL-WORLD ONCOLOGY

NCODA is accredited by the Accreditation Council for Pharmacy Education (ACPE) to provide continuing pharmacy education for pharmacists and pharmacy technicians. Through partnerships for joint accreditation, additional CE activities may offer credits for nurses and other professionals, depending on the program.

Rather than presenting abstract academic content, NCODA CE activities are structured around real-world oncology practice. Topics frequently address:

▲ Emerging targeted and immunotherapy agents;

- ▲ Toxicity recognition and management;
- ▲ Oral anticancer medication navigation;
- ▲ Operational workflow improvement;
- ▲ Social Determinants of Health and health equity;
- ▲ Reimbursement and policy considerations; and
- ▲ Specialty pharmacy integration and dispensing models.

Educational programming reflects the multidisciplinary nature of medically integrated oncology practices. Pharmacists, advanced practice providers, nurses and operational leaders contribute to and participate in CE

CONTINUED ON NEXT PAGE

CONTINUING EDUCATION

CONTINUED FROM PREVIOUS PAGE

programming, reinforcing team-based care principles.

MULTIPLE FORMATS AVAILABLE

NCODA CE activities are delivered in several formats to accommodate busy clinical schedules:

▲ **Live Webinars:** Regularly scheduled educational webinars address timely clinical and operational topics. Participants can attend live sessions, engage with presenters and complete required post-activity components to claim credits.

▲ **On-Demand CE:** Archived webinar recordings and other educational modules (such as written CE articles and CE podcasts) are available through NCODA's CE webpage. These allow learners to access content at their convenience while still earning CE credits upon completion of activity requirements.

▲ **Summit and Forum CE:** Educational sessions offered during NCODA's Spring Forum and Fall Summit provide in-person and virtual learning opportunities, many of which are approved for CE credits. These programs often focus on cutting-edge clinical developments, quality initiatives and collaborative practice models.

Recent CE examples reflect both clinical advancement and operational complexity, including therapeutic updates on newly approved agents, disease-state deep dives such as HER2-positive breast cancer, analyses of CAR-T therapy resource utilization and cost considerations, and precision oncology topics such as pharmacogenomics and tumor-agnostic treatment approvals. By offering both live and on-demand access, NCODA ensures that education remains accessible and adaptable to varying practice environments.

EARNING AND CLAIMING CE CREDITS

NCODA's CE activities follow

WHAT IS NCODA CONTINUING EDUCATION?

NCODA CE consists of accredited educational activities designed for oncology pharmacists, pharmacy technicians and, in select cases, nurses and other professionals. Programming focuses on clinical updates, operational strategies and multidisciplinary oncology care.

WHO CAN PARTICIPATE?

Most CE activities are open to NCODA members and eligible healthcare professionals. Specific eligibility and credit types are outlined within each activity description.

HOW DO I EARN CE CREDITS?

Participants must register through the NCODA CE portal, complete the live or on-demand activity, pass any required pre/post-assessment and submit

structured accreditation standards to ensure educational integrity and transparency.

To earn CE credits, participants must:

- ▲ Register for the activity through NCODA's CE portal (LecturePanda);
- ▲ Participate in the live session or complete the on-demand session recording in its entirety;
- ▲ Complete any required pre/post-assessment and activity evaluation; and
- ▲ Submit the CE code for the respective CE activity (disclosed toward the end of CE presentation).

Once these steps are completed, CE credits are processed according to accreditation guidelines. For ACPE-accredited activities, participants must provide the appropriate NABP e-Profile

ID, and month and day of birth information to ensure credits are properly transmitted to the CPE Monitor.

Certificates of completion are typically available for download after

an evaluation. For ACPE-accredited activities, learners must provide their NABP e-Profile ID for credit reporting.

HOW ARE CREDITS REPORTED?

ACPE credits are transmitted to CPE Monitor following successful completion. Certificates of completion are typically available for download within the CE platform.

ARE ON-DEMAND ACTIVITIES ACCREDITED?

Many archived webinars and modules offer CE credits, provided all activity requirements are completed within the stated accreditation window.

WHERE CAN I ACCESS NCODA CE PROGRAMS?

Current and archived CE activities are available at [NCODA.org/ce](https://www.ncoda.org/ce).

successful completion of all activity requirements. Participants are encouraged to retain documentation consistent with professional licensure requirements.

This structured process ensures compliance with accreditation standards while maintaining ease of access for learners.

EDUCATION THAT STRENGTHENS PRACTICE

NCODA CE is designed to fulfill licensure requirements and to directly strengthen oncology practice.

Teams frequently use CE programming to:

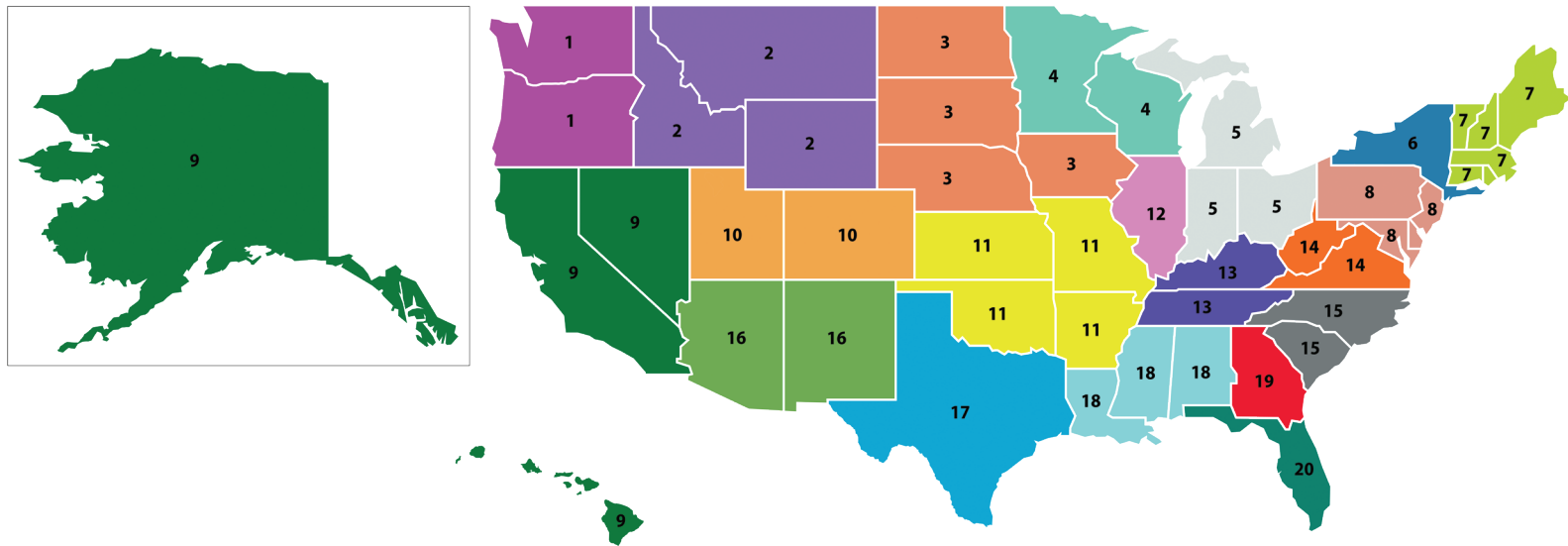
- ▲ Support onboarding of new pharmacists, nurses and technicians;
- ▲ Standardize toxicity management approaches;
- ▲ Prepare for implementation of new therapies;
- ▲ Reinforce oral therapy navigation workflows; and
- ▲ Align quality improvement initiatives with evolving standards.

Because the programming is grounded in medically integrated oncology practice, the education is practical, actionable and immediately applicable.



For more information about the NCODA's Continuing Education program, scan the QR code above.

NCODA REGIONAL LEADERS: STRENGTHENING THE LOCAL CONNECTION ACROSS A NATIONAL NETWORK



NNCODA's Regional Leaders program extends the organization's national mission into local oncology practice environments across the United States. Structured by geographic regions, the program designates oncology professionals to serve as ambassadors, peer resources and points of contact within their respective states.

The regional model reflects NCODA's commitment to medically integrated, multidisciplinary cancer care. Each region includes representation from key roles within oncology practices — advanced practice providers, pharmacists, pharmacy technicians, nurses and other clinical leaders — ensuring engagement is grounded in real-world experience. This structure supports balanced perspectives and reinforces the team-based approach that defines contemporary oncology practice.

By aligning leadership geographically, NCODA fosters connection among pro-

NCODA'S Regional Leaders program creates a practical avenue for peer-to-peer collaboration across diverse practice settings.

Professionals who share similar regulatory environments, payer landscapes and operational challenges. Regional leaders strengthen communication between members and the national organization, promote participation in educational initiatives and collaborative projects, and encourage engagement in forums, summits and national programming. Their presence helps maintain year-round connection beyond major meetings or virtual events.

The program also creates a practical avenue for peer-to-peer collaboration

across diverse practice settings, from academic medical centers to community-based clinics and specialty pharmacy operations. Regional leaders facilitate dialogue among professionals navigating comparable operational realities, creating space for the exchange of best practices, workflow innovations and clinical insights that may be uniquely relevant within a given region.

In addition to serving as connectors, regional leaders help identify emerging trends, barriers and educational needs within their areas. This feedback informs broader organizational priorities and helps ensure that national strategies remain responsive to the realities of oncology practice across varied settings.

Ultimately, the Regional Leaders program reinforces NCODA's mission to strengthen medically integrated oncology practices through collaboration, education and shared expertise — amplifying national

CONTINUED ON NEXT PAGE

REGIONAL LEADERS

CONTINUED FROM PREVIOUS PAGE

impact through meaningful regional connection and sustained peer engagement.

A full list of NCODA Regional Leaders by region follows (For an online list with clickable emails, go to www.ncoda.org/regional-leaders):

REGION 1 — WASHINGTON, OREGON

- ▲ **Andrew Ruplin**, PharmD
Fred Hutchinson Cancer Center
andrewruplin.pharmacy@gmail.com
- ▲ **Ashley Kohler-Gerber**, CPhT, CSPT, HDDP
American Oncology Network
amgerber89@gmail.com
- ▲ **Jennifer Lewellyn**, RN
Asante,
Jennifer.Lewellyn@asante.org
- ▲ **Dwight C. Macero**, MS, PA-C
Fred Hutch Cancer Center
dmacero@fredhutch.org

REGION 2 — IDAHO, WYOMING, MONTANA

- ▲ **Heidi Gay**, CPhT
Rocky Mountain Oncology
hgay@rockymountainoncology.com
- ▲ **Julia Kerr**, PharmD,
St. Luke's Cancer Institute
Kerju@slhs.org

REGION 3 — N. DAKOTA, S. DAKOTA, NEBRASKA, IOWA

- ▲ **Jennifer Hasiak**, PharmD, RPh
Hematology & Oncology Consultants
jhasiak@hocdocs.com
- ▲ **Andrea Nelson**, CPhT,
Nebraska Cancer Specialists
ajnelson@nebraskacancer.com

REGION 4 — MINNESOTA, WISCONSIN

- ▲ **Jennifer Dix**, CPhT
US Oncology
Jennifer.Dix@usonology.com
- ▲ **Naomie Freyholtz**, RN
Olivia Hospital and Clinic
Naomi.M.Freyholtz@HealthPartners.com
- ▲ **Molly Schmidt**, PharmD, BCOP, BCPS, CSP
Maine Health
Molly.Schmidt@mainehealth.org

REGION 5 — MICHIGAN, INDIANA, OHIO

- ▲ **Jelena Dimoska**, PharmD, MS, BCPS
Karmanos Specialty Pharmacy
dimoskaj@karmanos.org

REGION 6 — NEW YORK

- ▲ **Michelle Phillips**, PharmD, BCOP
University of Rochester Medical Center,
Specialty Pharmacy
michelle_phillips@urmc.rochester.edu
- ▲ **Leslie Hurley**, RN
New York Oncology Hematology
leslie.hurley@nyoh.com

- ▲ **Priscilla Lam**, PA-C
Memorial Sloan Kettering Cancer Institute
priscillalam619@gmail.com

- ▲ **Sloan Stevens**, CPhT
University of Rochester Medical Center,
Specialty Pharmacy
sloan_stevens@urmc.rochester.edu

REGION 7 — CONNECTICUT, MAINE, MASSACHUSETTS, NEW HAMPSHIRE, RHODE ISLAND, VERMONT

- ▲ **Christine Cronin**, CPhT, COPhT
Mass General Brigham
Specialty rootycc@comcast.net
- ▲ **Gillian Milton**, RN
Dana Farber
GillianC_Milton@dfci.harvard.edu
- ▲ **Julia Schwechheimer**, PharmD, BCOP
Maine Health
julia.schwechheimer@mainehealth.org

REGION 8 — PENNSYLVANIA, NEW JERSEY, MARYLAND, DC, DELAWARE

- ▲ **David Borrone**, RPh
AtlantiCare Cancer Care Institute
DBorrone@atlanticare.org
- ▲ **Sara Rentzel**, CPhT
American Oncology Network
Sara.Rentzel@aonology.com
- ▲ **Caprina Tomlinson**, RN
RWJ Barnabas Health
caprina.tomlinson@rwjbh.org

REGION 9 — CALIFORNIA, ALASKA, HAWAII

- ▲ **Aaron Ginsberg**, PharmD
Scripps Health
ginsberg.aaron@scrippshealth.org
- ▲ **Jennifer Berni**, CPhT
Stockton Hematology Oncology
jenn.berni90@gmail.com

- ▲ **Tara Davis**, RN
Cedars Sinai Medical Center
taradavis26@gmail.com

REGION 10 — UTAH, COLORADO

- ▲ **Maren Campbell**, PharmD
Huntsman Cancer Institute
maren.campbell@hci.utah.edu
- ▲ **Kristan Monugian**, CPhT
HouseRx
monugiank@gmail.com
- ▲ **Maria Schroeder**, RN
Utah Cancer Specialists
mschroeder@utahcancer.com

REGION 11 — ARKANSAS, KANSAS, OKLAHOMA, MISSOURI,

- ▲ **Kristen Eblen**, PharmD
Lake Regional Cancer Center
keblen@lakeregional.com
- ▲ **Brittini Dissen**, RN
Lake Regional Cancer Center
bdissen@lakeregional.com

REGION 12 — ILLINOIS

- ▲ **Tammy McClellan**, PharmD
Riverside Health
drtammymcclellan@gmail.com
- ▲ **Heather Maynard**, CPhT, COPhT
Swedish American Hospital
hmaynard@swedishamerican.org
- ▲ **Barbara Cortino**, RN
US Oncology
bcortino1114@aol.com

REGION 13 — KENTUCKY, TENNESSEE

- ▲ **Megan May**, PharmD, BCOP, FHOPA, FAPO
Baptist Health
Megan.May@BHSI.COM
- ▲ **Amanda McCauley**, BSN, RN, OCN
Norton Cancer Institute
amm61784@aol.com

REGION 14 — WEST VIRGINIA, VIRGINIA

- ▲ **Simona Armanca**, PharmD
Inova Health System
simona.armanca@inova.org
- ▲ **Emma Gilham**, RN, BSN
CAMC Cancer Center
Emma.Gilham@vandaliahealth.org
- ▲ **David Johnson**, CPhT-Adv, CSPT, BCHCPT
VA Medical
dbjohnsoncphnt@icloud.com

REGION 15 — NORTH CAROLINA, SOUTH CAROLINA

- ▲ **Brandy Persson**
PharmD, BCOP
Cone Health Cancer Center

brandy.persson@conehealth.com

- ▲ **Julie Wright**, RN
Duke Raleigh Cancer Center
julie.e.wright@duke.edu

REGION 16 — ARIZONA, NEW MEXICO

- ▲ **Margaret Brodie**, MSN, RN, OCN
Mayo Clinic
Brodie.Margaret@mayo.edu
- ▲ **Bianca Medina**, CPhT
Mayo Clinic
Medina.Bianca@mayo.edu
- ▲ **Vishal Shah**, PharmD, RPh, MBA
Ascension
vishal.shah@ascension.org

REGION 17 — TEXAS

- ▲ **Chris Sellers**, RPh
Texas Oncology
chris.sellers@usonology.com
- ▲ **Tonya Robinson**, RN
MD Anderson
tdrobinson1@mdanderson.org
- ▲ **Angla Wilson**, CPhT
University of Texas Tyler
Angela.Wilson@uttyler.edu

REGION 18 — ALABAMA, LOUISIANA, MISSISSIPPI

- ▲ **Tiffany Mitchem**, PharmD
Southern Cancer Center
tiffany.mitchem@southerncancercenter.com

REGION 19 — GEORGIA

- ▲ **Marjan Forouzan**, PharmD
Kaiser Permanente
marjan.x.forouzan@kp.org
- ▲ **Tracy Shubert**, CPhT
University Cancer and Blood Center
tracy.shubert@universitycancer.com

REGION 20 — FLORIDA

- ▲ **Sasha Watson**, PharmD
Sylvester Comprehensive Cancer Center
axw859@med.miami.edu
- ▲ **Donna Gallenstein**, RN, BSN
Moffitt Cancer Center
Donna.Gallenstein@moffitt.org
- ▲ **Shenitha Edwards**, CPhT
Cancer Specialists of North Florida
Shenitha.Edwards@csnf.us



NCODA COMMUNITIES: ADVANCING MULTIDISCIPLINARY ONCOLOGY PRACTICE

NNCODA Communities reflect how oncology care actually happens — as a coordinated, team-based effort across disciplines and practice settings.

Advanced practice providers (APPs), nurse practitioners, and physician assistants represent NCODA's newest professional community. Over the past several years, APP engagement has steadily grown, and NCODA is now further expanding its focus on this community — increasing visibility, strengthening connections and opportunities for APPs across the oncology care continuum.

Supporting this growth is **Corinne Shamehdi**, PA-C, Associate Director of Membership & Professional Development, who will lead the growing APP community while overseeing NCODA's broader Communities portfolio. Working alongside her are Membership & Professional Development leaders across professional groups:

▲ **Natasha Olson**, PharmD, Senior Manager of Pharmacist Membership & Professional Development;

▲ **Mary K. Anderson**, BSN, RN, OCN, Senior Manager of Nursing Membership & Professional Development;

▲ **Taryn Newsome**, CPHT, Associate Manager of Membership & Professional Development — Pharmacy Technicians; and

▲ **Mustafa Abacioglu**, MPharm, Manager of Membership & Professional Development — Students | Residents | Fellows.

Pharmacists, nurses, pharmacy technicians and prescribers — including physicians and APPs— carry distinct responsibilities, but they share the goal of delivering high-quality, patient-centered care in increasingly complex clinical and operational environments. Rather than operating in silos, NCODA



organizes engagement by professional role while keeping the larger team in view.

Members connect with peers who understand evolving therapies, payer pressures, regulatory requirements and workflow demands that shape oncology practice, fostering practical dialogue and shared problem-solving that translate directly into local practice improvement.

ADVANCED PRACTICE PROVIDERS

APPs play a central role in patient evaluation, treatment management, toxicity monitoring, patient education and care coordination, and often manage their own patient panels. Positioned at the intersection of clinical decision-making and care delivery, APPs serve as a consistent clinical touchpoint for patients while advancing quality, efficiency and access while helping close care gaps driven by oncology workforce shortages.

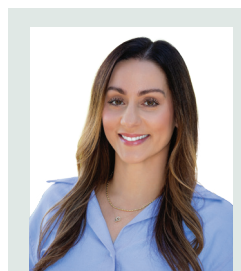
APPs also frequently serve as sub-investigators on clinical trials, giving them early familiarity with emerging therapies as they enter clinical practice. This frontline insight

strengthens NCODA initiatives such as Positive Quality Interventions (PQIs), PQI in Action and Patient Education Sheets (PES) helping translate new treatment knowledge into practical care delivery strategies across oncology practices.

Through this community, APPs connect with colleagues navigating similar clinical, reimbursement and workflow challenges. Engagement offers opportunities for education, peer dialogue and leadership involvement within NCODA.

APPs also contribute valuable clinical insight to conversations around quality improvement, patient access and care delivery within oncology practices. By engaging within NCODA, APPs see how clinical decisions intersect with reimbursement models, quality initiatives and access strategies — reinforcing their influence both at the point of care and within the broader oncology practice framework.

Learn more about NCODA's APP Community at ncoda.org/advanced-practice-providers.



Meet our APP Community Lead: **Corinne Shamehdi**, PA-C, Associate Director of Membership & Professional Development | NCODA.

NCODA COMMUNITIES: ONCOLOGY PHARMACISTS

Driving clinical quality, operational leadership and the foundation of medically integrated oncology practice

Oncology pharmacy is where NCODA began — and pharmacists remain central to the organization’s identity and mission. From clinical decision support to operational oversight, oncology pharmacists play a critical role in ensuring that complex therapies are delivered safely, efficiently and in alignment with quality standards.

Within medically integrated oncology practices, pharmacists serve as a bridge between prescribing decisions, reimbursement realities and patient access considerations. They navigate evolving treatment guidelines, prior authorization requirements, drug procurement challenges and quality reporting expectations — while maintaining focus on patient outcomes. Their work extends beyond medication verification to stewardship of therapeutic strategy, oversight of dispensing operations and coordination across care teams.

NCODA’s oncology pharmacist community reflects these layered responsibilities. It creates space for dialogue that connects clinical expertise with operational execution. Members engage with peers who understand the pressures of specialty drug management, value-based initiatives and regulatory compliance — conversations grounded in practical experience.

Through structured engagement, oncology pharmacists collaborate on workflow optimization, access strategies, quality initiatives and implementation of emerging therapies. By connecting professionals facing similar payer landscapes and operational demands, NCODA supports problem-solving that translates



Pharmacists take part in a meet and greet at the 2025 NCODA International Fall Summit in Orlando, Florida.

into measurable local improvement.

In addition to peer collaboration, pharmacists engage with key NCODA initiatives and professional supports, including:

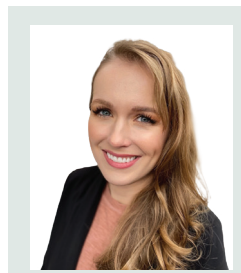
- ▲ **Positive Quality Interventions (PQIs)** — Data-driven tools demonstrating the value of oncology pharmacy services and improving patient outcomes.
- ▲ **Medically Integrated Dispensing Pharmacy (MIP) Standards** — A framework supporting safe, efficient and compliant dispensing within oncology practices.
- ▲ **Treatment Support Kits (TSKs)** — Structured resources that promote consistent, patient-centered therapy management.
- ▲ **NCODA CONNECT: Pharmacist Community** — A platform for discussion and role-specific collaboration.
- ▲ **Educational Webinars and Continuing Education** — Ongoing learning focused on clinical updates and operational strategy.
- ▲ **Professional Development Opportunities** — Pathways supporting leadership growth within oncology pharmacy.
- ▲ **Support Your Pharmacy Practice Resources** — Practical tools tailored to operational needs.

▲ **Pharmacist Meet and Greets** — Provide an opportunity for pharmacists from across the world to gather in an informal setting to meet with their peers, share best practices and ask questions in a relaxed setting prior to the start of an NCODA conference.

Pharmacists also play a leadership role within the broader NCODA framework. Their insights inform organizational priorities and national initiatives designed to strengthen medically integrated oncology care. In many settings, they lead efforts related to quality metrics, clinical pathways, cost stewardship and policy response.

Across academic medical centers, community oncology clinics and specialty pharmacy operations, oncology pharmacists shape how care is delivered and sustained. As the oncology landscape evolves, NCODA provides a structured environment that keeps pharmacists connected and engaged — reinforcing the profession’s influence while strengthening the practices it serves.

Pharmacists interested in deeper engagement may connect with NCODA leadership at ncoda.org/pharmacists.



Meet our Oncology Pharmacist Community Lead: **Natasha Olson**, PharmD, Senior Manager of Pharmacist Membership & Professional Development | NCODA.



Nurses gather for a photo opportunity during the Nursing Community Meet & Greet at the 2025 NCODA International Spring Forum in Denver.

NCODA COMMUNITIES: ONCOLOGY NURSES

Empowering one another and elevating care in a calling unlike any other

Oncology nursing is not just a specialty. It is a calling. In medically integrated oncology practice, nurses are the bridge between clinical decisions and the patient experience. They sit with patients when fear sets in, translate complex treatment plans into plain language, coordinate care across teams and follow up when something feels off. They hold both the science and the humanity of cancer care in their hands every day, balancing clinical vigilance with compassion at every stage of treatment.

NCODA's oncology nurse community was built to support that work. Designed to reflect the realities of modern oncology practice, the community connects nurses across diverse care settings to share insights, address operational challenges and strengthen patient-centered delivery models.

What began nearly a decade ago as a small group of nurses gathering to share stories and support has grown into a vibrant international community of more than 1,700 oncology nurses. That growth reflects a real and recognized need — a place where nurses can meet regularly, speak candidly about challenges and build

practical solutions together. Whether serving as an infusion nurse, navigator, clinic nurse or nurse leader, each member has a seat at the table and a voice that contributes to shared progress.

Within the NCODA nurse community, members engage in dialogue grounded in daily practice. Conversations focus on workflow coordination, toxicity management, patient education strategies and quality improvement efforts. The emphasis remains on actionable exchange — solutions that can be implemented directly within local practices and sustained across evolving care models.

In addition to peer collaboration, members have access to integrated care tools developed by oncology nurses to support oral anticancer medication management and broader practice coordination, including:

- ▲ **OAM Welcome Letter for Patients** — A structured introduction to oncology care services and expectations.
- ▲ **OAM New Start Checklist for Nurses** — A practical guide promoting consistency during therapy initiation.
- ▲ **Plan of Care Treatment Guide for Patients** — A clear framework outlining treatment plans and supportive care.
- ▲ **New Start Adherence Barriers Assessment** — A tool to identify and address obstacles to treatment compliance.

▲ OAM Prescription and Patient Tracking Forms

— Documentation supports promoting accountability and coordination.

▲ **OAM Follow-Up Documentation Template** — A standardized format reinforcing continuity and quality monitoring.

These resources strengthen documentation, enhance patient communication and promote consistency across multidisciplinary teams. Through the community, nurses exchange insights on implementation and refinement within varied practice settings.

As oncology care continues to evolve toward value-based and integrated de-

livery models, nurses play an expanding role in adherence initiatives, quality measurement and patient engagement strategies. Engagement within NCODA ensures their perspectives remain central to broader organizational conversations shaping education, collaboration and national programming.

The nurse community also supports professional growth and leadership development, reinforcing nurses' visibility within multidisciplinary teams and strengthening their influence in shaping care delivery systems.

Oncology nurses interested in deeper engagement may connect with NCODA leadership at ncoda.org/nurses.



Meet our Oncology Nursing Community Lead:
Mary K. Anderson, BSN, RN, OCN, Senior Manager of Nursing Membership & Professional Development | NCODA.

NCODA COMMUNITIES: PHARMACY TECHNICIANS

Elevating oncology pharmacy techs through connection, professionalism & certification

NNCODA's oncology pharmacy technician community supports the professionals who do much of the day-to-day work that keeps oncology practices running smoothly and patients moving safely through complex treatment pathways.

Recognizing that pharmacy technicians play a vital role within medically integrated cancer care teams, NCODA — through the Oncology Pharmacy Technician Association (OPTA) — provides a dedicated community for technicians

to connect, grow and strengthen their professional impact.

The Oncology Pharmacy Technician Association (OPTA) was created by oncology pharmacy technicians, for oncology pharmacy technicians. It offers

a unified voice, essential resources and meaningful connections that empower technicians to advance both personally and professionally.

OPTA champions collaboration across the multidisciplinary care team and advocates for the role of pharmacy technicians in delivering the highest standard of care to patients.

Membership in OPTA is complimentary, reinforcing the association's commitment to accessibility and collective growth.



Meet our OPTA Lead: **Taryn Newsome, CPhT**, Associate Manager of Membership & Professional Development — Pharmacy Technicians | NCODA.



CERTIFIED ONCOLOGY PHARMACY TECHNICIAN CREDENTIAL

To support career advancement and recognize specialized expertise, NCODA and OPTA offer the **Certified Oncology Pharmacy Technician (COPT)** credential — a voluntary certification designed specifically for technicians practicing in oncology settings. Certification highlights:

- ▲ Designed for pharmacy technicians with hands-on experience in oncology pharmacy.
- ▲ Focuses on oncology-specific knowledge and practical application within a multidisciplinary care team.
- ▲ Promotes professional recognition and confidence in role proficiency.

The COPT credential reflects

Within the NCODA technician community, members engage in regular dialogue about best practices, workflow integration, safety standards and emerging operational needs. OPTA supports education and advancement through a range of programs, including:

- ▲ **OPTA Monthly Webinar Series** — Focused discussions on current topics such as medication updates, workflow challenges and role-specific insights.
- ▲ **Behind The Counter** — OPTA is excited to introduce its newly refreshed newsletter, a dynamic publication created to inform, elevate, and connect oncology pharmacy technicians nationwide. Each issue is intentionally streamlined to provide digestible, meaningful insights, including legislative updates, workflow innovations, certification opportunities and member spotlights that highlight the strength of our community

NCODA's commitment to supporting technician excellence and ensuring that the unique demands of oncology pharmacy practice are met with rigorous, relevant preparation.

Whether working in large health systems, community oncology clinics or specialty pharmacy environments, oncology pharmacy technicians who engage with OPTA and the COPT certification expand their professional network, deepen their expertise and strengthen their contribution to patient care.

Technicians interested in pursuing COPT may find further information at www.ncoda.org/pharmacy-technician-certification.

- ▲ **Continuing Education Opportunities** — Targeted education to help technicians build clinical and operational skills relevant to oncology practice.
- ▲ **Professional Educators Network** — Oncology pharmacy technicians play a vital role in advancing patient care, and the Professional Educators Network creates a structured pathway for technician leaders to share their expertise and grow professionally. This volunteer network connects engaged technicians with opportunities to contribute to educational programming, clinical initiatives, and resource development that directly impact cancer care delivery.

Pharmacy technicians interested in deeper engagement may connect with NCODA leadership at ncoda.org/pharmacy-technicians.

NCODA COMMUNITIES: STUDENTS & EMERGING LEADERS

Connecting tomorrow's professionals with education, experience and opportunity

NNCODA's student-focused communities are designed to support future leaders across the oncology care continuum. From classroom to career launch, students who join NCODA gain access to professional networking, educational resources, leadership experience and pathways into meaningful post-graduate roles.

Central to this effort is the NCODA Professional Student Organization (PSO) — a vibrant, student-driven community that brings passion, curiosity and real-world opportunity to those exploring oncology and related healthcare fields.

PROFESSIONAL STUDENT ORGANIZATION (PSO)

The PSO is a global student community for those interested in oncology, pharmacy, research, advocacy and healthcare leadership. PSO offers a dynamic platform for students to learn, connect and grow alongside professionals from across the oncology spectrum.

Through national engagement and student-led initiatives, chapters provide students with opportunities to build leadership skills, expand clinical understanding and gain insights into real-world oncology practice.

Students involved in PSO can access exclusive benefits, including:

- ▲ **Educational Resources & Webinars** — Cutting-edge oncology content used by professionals.
- ▲ **Leadership Development** — Roles on PSO executive boards and committees that build organizational experience.
- ▲ **Networking & Mentorship** — Connections with NCODA members, professionals and student peers nationally and internationally.

▲ **Career & Internship Opportunities** — Exposure to residencies, fellowships and industry pathways.

▲ **Chapter Support** — Templates, stipends and branded materials to help chapters thrive.

Whether you plan to practice clinically, pursue research, or explore oncology policy, PSO offers foundational experiences that make your transition from student to professional seamless. Learn more at ncoda.org/pso.

MEDICALLY INTEGRATED ONCOLOGY PHARMACY (MIOP) RESIDENCY PROGRAM

The MIOP Residency Program offers structured, practice-based training within medically integrated oncology settings. Designed for pharmacists seeking immersive oncology experience, the program integrates residents directly into care teams, where they engage in medication management, patient education and operational coordination. By combining clinical exposure with workflow and quality initiatives, MIOP prepares participants for leadership in modern oncology practice.

Learn more at ncoda.org/miop-residency-program.

NCODA FELLOWSHIP PROGRAMS

NCODA's Fellowship Programs provide structured, immersive post-graduate opportunities for Doctor of Pharmacy graduates looking to deepen their oncology expertise, leadership skills and professional impact.

These fellowships offer real-world experience in medically integrated practice settings and national initiatives, blending project engagement, collaboration and education to prepare fellows for careers across clinical, operational and advocacy roles.

Current fellowship

experiences may include:

- ▲ **Hands-on practice exposure** — Real-world involvement in oncology teams and clinical operations.
- ▲ **Cross-disciplinary projects** — Participation in national quality, education and policy initiatives.
- ▲ **Teaching and presentation opportunities** — Platforms to present insights and contribute to education efforts.
- ▲ **Mentorship and professional development** — Guidance through structured support and leadership engagement.

Fellowships are designed to equip graduates with the skills, networks and perspective needed to thrive in advanced oncology practice and leadership. Details and application information can be found at ncoda.org/ncoda-fellowships.

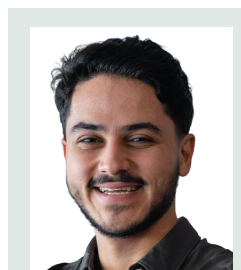
NCODA MENTORSHIP PROGRAM

Complementing PSO and fellowships, the NCODA Mentorship Program connects students and early-career pharmacists with seasoned oncology professionals. This structured program pairs participants with mentors who provide personalized guidance, career insight and support through practical tools such as CV reviews, mock interviews and shadowing experiences.

Key elements include:

- ▲ One-on-one mentor-mentee pairing based on interests and goals.
- ▲ Professional development dialogue that covers networking, rotations, career pathways and interview preparation.
- ▲ Goal-tracking and regular check-ins to support progress through the mentorship cycle.

While mentorship is optional, it offers a meaningful bridge between academic experience and professional practice — especially for those pursuing oncology careers. Learn more at ncoda.org/mentorship-program.



Meet our Student Community Lead: **Mustafa Abacioglu**, MPharm, Manager of Membership & Professional Development — Students / Residents / Fellows | NCODA.